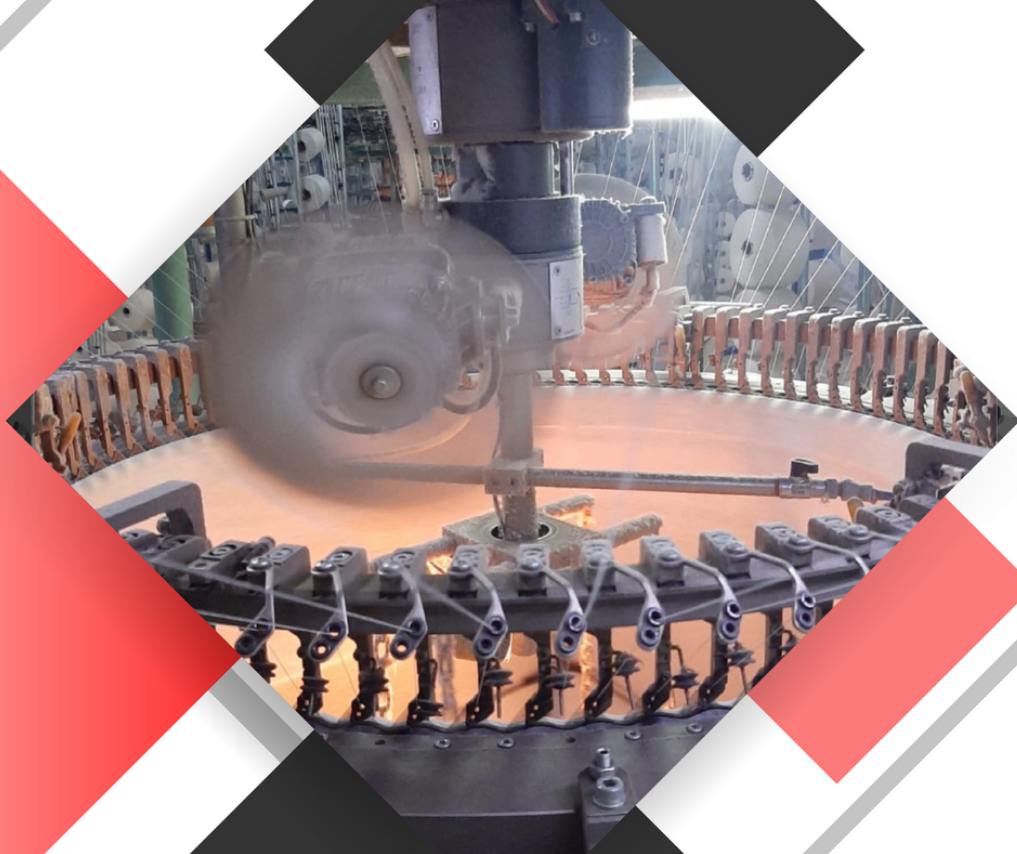




*Quality In  
Fabric*



# CATALOGUE OF KNITTED FABRIC





**Hazal Textile is a knitted fabric manufacturer based in  
TURKEY/Gaziantep**

### **GENERAL INFORMATION**

**POSSIBILITY PRODUCE IN DIFFERENT WIDTH AND GSM.  
ALL TYPES OF FABRICS COULD PRODUCE OE,  
CARDED AND COMBED QUALITIES ACCORDINGLY  
WITH YOUR REQUEST**

*\*CUSTOMIZE YOUR COLORS BY HAZAL COLOR CHARTS AND PANTONE CODES*

*\*SPECIAL ORDER ACCEPTABLE*

*\*PRINTED OPTIONS*

### **FURTHER INFORMATION**

Production Capacity : 100 Tones / Month  
Delivery Time : 1 Container – 15 Days  
Colour: Pantone Colours, Custom Colours  
Package Detail : 25 KG Roll Packing  
Minimum Order Per Colour : 150 KG  
HS KODU : 6006.22.00.00.00

### **CONTACT US**

✉ info@hazaltextile.com

☎ (+90 539) 546 45 65

🌐 www.hazaltextile.com

📷 hazalfabrics 🐦 Hazal Fabrics

# ● KNITTED FABRICS

HAZAL TEXTILE



## SINGLE JERSEY FABRIC

Yarn Counts	Fabric Content	Widht	Weight(Gr)
24/1 , 26/1 , 28/1 30/1 , 36/1 , 40/1	%100 Cotton	90-200 cm	130-180 gr
	%95 Cotton %5 Lycra	90-200 cm	150-220 gr

100%  
Cotton,Bamboo,Modal,Viscose,Polyester

# ● KNITTED FABRICS

HAZAL TEXTILE

## FLEECE FABRIC BRUSHED

## FLEECE FABRIC DIAGONAL

Yarn Counts	Fabric Content	Widht	Weight(Gr)
30/70/10	%65 Cotton %35 PES	90-200 cm	280-400 gr
30/30/10	%100 Cotton	90-200 cm	290-400 gr
24/70/10	%90 Cotton %10 PES	180-200 cm	280-500 gr
30/70/20	%70 Cotton %30 PES	90-200 cm	280-400 gr

# ● KNITTED FABRICS

HAZAL TEXTILE



## FRENCH TERRY FABRIC

Yarn Counts	Fabric Content	Widht	Weight(Gr)
20/10 , 30/20 , 30/30 30/100 , 30/150	%100 Cotton	100-185 cm	190-280 gr
	%95 Cotton %5 Lycra %95 Bamboo %5 Lycra	180-185 cm	190-280 gr
	%75 Cotton %20 Pes %5 Lycra	180-185 cm	190-280 gr

# ● KNITTED FABRICS

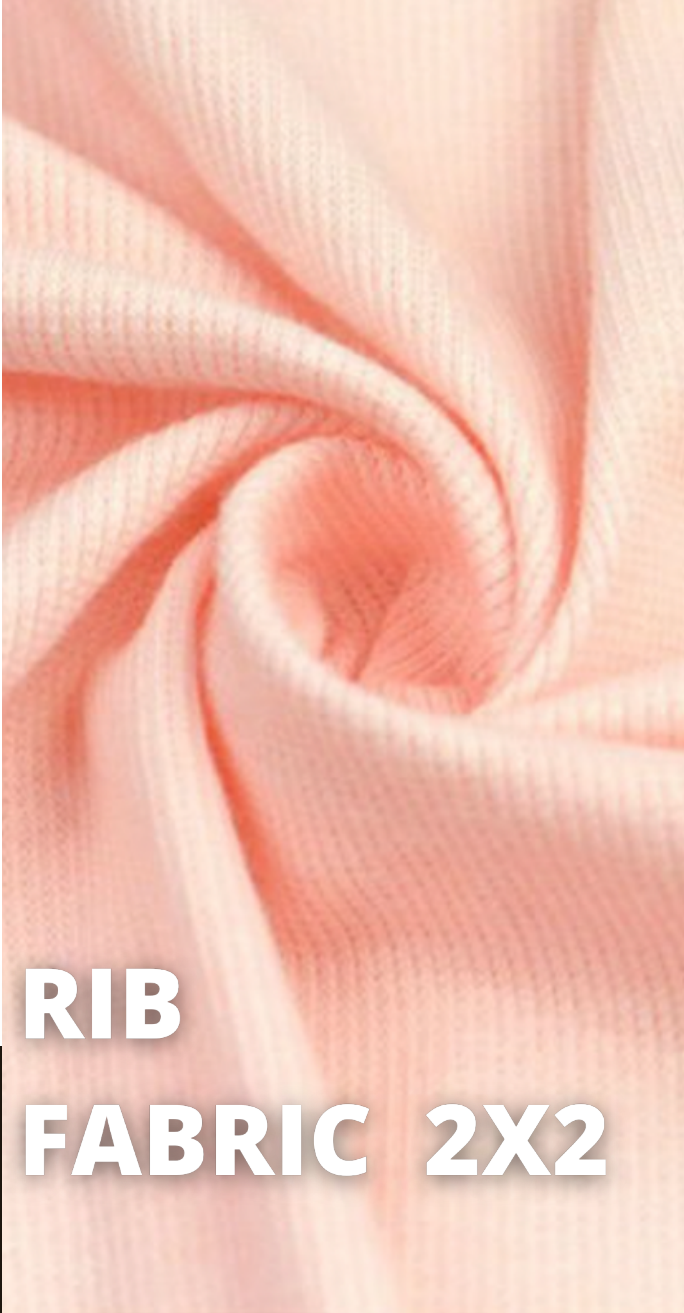
HAZAL TEXTILE

## LACOSTE PIQUE FABRIC

Yarn Counts	Fabric Content	Widht	Weight(Gr)
30/1 , 36/1 , 40/1	%100 Cotton	120-210 cm	160-210 gr
	%95 Cotton %5 Lycra	120-210 cm	150-220 gr
30/1	%50 Cotton %50 PES	210 cm	185 gr
30/1	%60 Cotton %40 PES	210 cm	180 gr

# ● KNITTED FABRICS

HAZAL TEXTILE



**RIB  
FABRIC 2X2**



**RIB  
FABRIC 1X1**

Yarn Counts	Fabric Content	Widht	Weight(Gr)
20/1, 30/1 , 30/2	%100 Cotton	90-170 cm	170-310 gr
	%95 Cotton %5 Lycra	90-170 cm	170-310 gr
20/1, 30/1 , 30/2 Rib 1x1	%97 Cotton %3 Lycra	90-170 cm	170-310 gr

# ● KNITTED FABRICS

HAZAL TEXTILE



## RIB FABRIC 6X5

Yarn Counts

Fabric Content

Widht

Weight(Gr)

24/1 , 30/1

%95 Cotton %5 Elasthane

110 cm

190-290 gr



# ● KNITTED FABRICS

HAZAL TEXTILE



## INTERLOCK FABRIC

## INTERLOCK DOUBLEFACE FABRIC

Yarn Counts	Fabric Content	Widht	Weight(Gr)
24/1 , 28/1 , 30/1 36/1 , 40/1	%100 Cotton	90-100 cm	170-225 gr
30/70/30 Interlock Doubleface	%90 Cotton %10 Pes	90-170 cm	250-330 gr

# ● KNITTED FABRICS

HAZAL TEXTILE



## CARDIGAN FABRIC

Yarn Counts	Fabric Content	Widht	Weight(Gr)
24/1 , 28/1 , 30/1 36/1 , 40/1	%100 Cotton	90-100 cm	90-100 gr
	%75 Cotton %20 Pes %5 Lycra	90-100 cm	170-310 gr

# ● KNITTED FABRICS

HAZAL TEXTILE



1/5

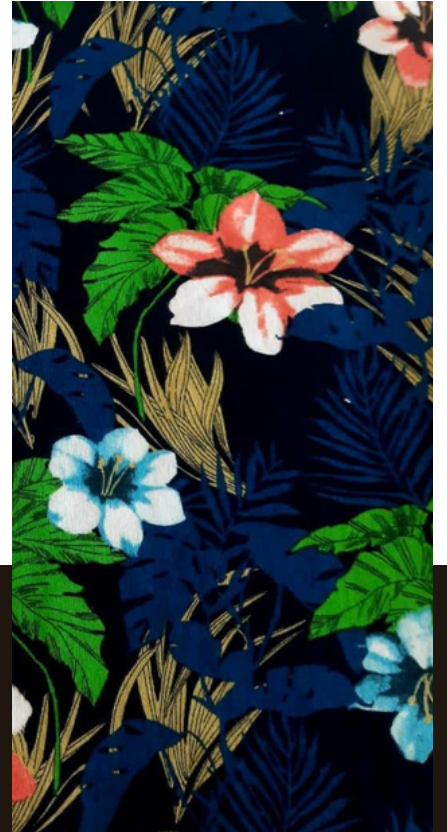
## VELVET FABRIC



Yarn Counts	Fabric Content	Widht	Weight(Gr)
Knitted Velvet	Cotton/Pes Viscos/Pes Modal/Pes	185 cm	180-280 gr
	%78 Cotton %17 Pes %5 Lycra	185 cm	170-310 gr

# ● KNITTED FABRICS

HAZAL TEXTILE



## ALL TYPES OF FABRICS WITH PRINTED OPTIONS

Single Jersey

French Terry

Rib

Interlock

Fleece

Lacoste